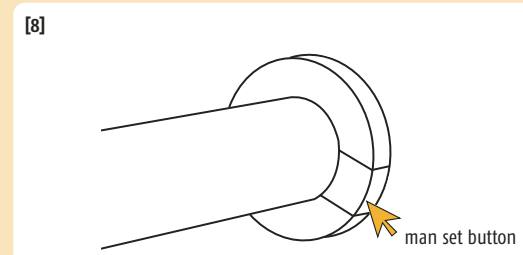
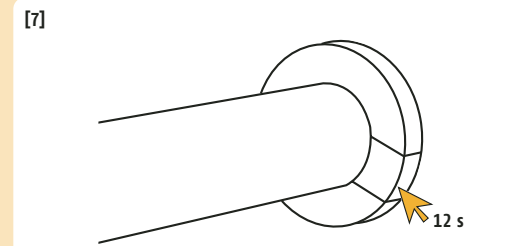
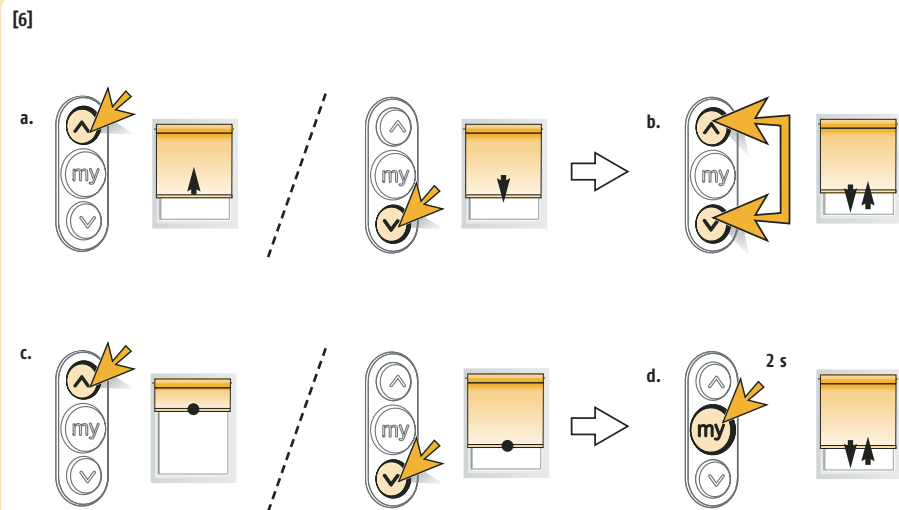


D

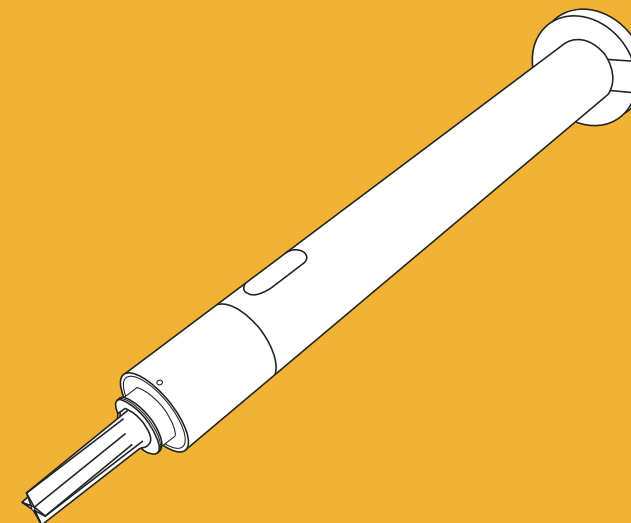


somfy.com



Installation guide
Guía de instalación
Guida all'installazione
Guide d'installation

Roll up wirefree RTS



Ref. 5 047 209



www.somfy.com

Australia: SOMFY PTY LTD (61) 2 9638 0744	Hungary: SOMFY Kft (36) 1814 5120	Singapore: SOMFY PTE LTD (65) 638 33 855
Austria: SOMFY GesmbH (43) 662 62 53 08	India: SOMFY INDIA PVT Ltd (91) 11 51 65 91 76	Slovaquia: cf. Czech Republic SOMFY Spol s.r.o. (420) 296 372 486-7
Belgium: SOMFY BELUX (32) (0) 2 712 07 70	Italy: SOMFY ITALIA s.r.l (39) 024 84 71 84	South Korea: SOMFY JOO (82) 2 594 4333
Brasil: SOMFY BRASIL STDA (55 11) 6161 6613	Japan: SOMFY KK +81-45-475-0732	Spain: SOMFY ESPANA SA (34) 934 800 900
Canada: SOMFY ULC (1) 905 564 6446	Lebanon: cf. Cyprus somfy middle east (961) 1 391 224	Sweden: SOMFY AB (46) 40 165900
Cyprus: SOMFY MIDDLE EAST (357) 25 34 55 40	Mexico: SOMFY MEXICO SA de CV (52) 55 5576 3421	Switzerland: SOMFY A.G. (41) 18 38 40 30
Czech Republic: SOMFY Spol s.r.o. (420) 296 372 486-7	Morocco: SOMFY MAROC (212) 22 95 11 53	Taiwan: SOMFY TAIWAN (886) 2 8509 8934
Denmark: SOMFY AB DENMARK (45) 65325793	Netherlands: SOMFY BV (31) 23 55 44 900	Turkey: SOMFY TURKEY +90 216 651 30 15.
Finland: SOMFY AB FINLAND (358) 957 13 02 30	Norway: SOMFY NORWAY (47) 67 97 85 05	UAE: SOMFY GULF +971 4 88 32 808
France: SOMFY FRANCE (33) 820 374 374	Poland: SOMFY SP Z.O.O (48) 22 618 80 56	United Kingdom: SOMFY LTD (44) 113 391 3030
Germany: SOMFY GmbH (49) 7472 930 0	Portugal: cf. Spain - SOMFY ESPANA SA (351) 229 396 840	United States: SOMFY SYSTEMS Inc (1) 609 395 1300
Greece: SOMFY HELLAS (30) 210 614 67 68	Russia: cf. Germany SOMFY GmbH (7) 095 781 47 72, (7) 095 360 41 86	
Hong Kong: SOMFY Co. Ltd (852) 25236339		

US

D PROGRAMMING 6-8

[6]. Readjusting the limits

- Press the UP or DOWN button, to move the shade to the limit to be readjusted.
- Press the UP and DOWN buttons simultaneously for 5 seconds until the motor jogs.
- Press and hold the UP or DOWN button to move the shade to the new desired position.
- To confirm the new limits press the MY button for 2 seconds until the motor jogs or press on UP and DOWN button simultaneously to exit without any end-limit changes.

[7]. Factory reset

To reset to factory mode, press and hold the switch for 12 seconds with a small paperclip. The LED begin one time then stays on and after 7s starts to flash. Release the switch when the LED extinguishes. All the transmitters and limits are erased.

[8]. Manual operation

Press the man set button and the motor will move in the opposite direction from the last movement. Press this button again to stop the motor.

E TROUBLE SHOOTING

The motors doesn't work

Verify:

- The battery of the motor
- The battery of the remote control
- The compatibility of the remote control

The equipment stops to soon

Verify:

- The end-limits of the motor are properly adjusted
- The crown is properly fitted to the tube

ES

D PROGRAMMING 6-8

[6]. Readjusting the limits

- Press the UP or DOWN button, to move the shade to the limit to be readjusted.
- Press the UP and DOWN buttons simultaneously for 5 seconds until the motor jogs.
- Press and hold the UP or DOWN button to move the shade to the new desired position.
- To confirm the new limits press the MY button for 2 seconds until the motor jogs or press on UP and DOWN button simultaneously to exit without any end-limit changes.

[7]. Factory reset

To reset to factory mode, press and hold the switch for 12 seconds with a small paperclip. The LED begin one time then stays on and after 7s starts to flash. Release the switch when the LED extinguishes. All the transmitters and limits are erased.

[8]. Manual operation

Press the man set button and the motor will move in the opposite direction from the last movement. Press this button again to stop the motor.

E TROUBLE SHOOTING

The motors doesn't work

Verify:

- The battery of the motor
- The battery of the remote control
- The compatibility of the remote control

The equipment stops to soon

Verify:

- The end-limits of the motor are properly adjusted
- The crown is properly fitted to the tube

IT

D PROGRAMMING 6-8

[6]. Readjusting the limits

- Press the UP or DOWN button, to move the shade to the limit to be readjusted.
- Press the UP and DOWN buttons simultaneously for 5 seconds until the motor jogs.
- Press and hold the UP or DOWN button to move the shade to the new desired position.
- To confirm the new limits press the MY button for 2 seconds until the motor jogs or press on UP and DOWN button simultaneously to exit without any end-limit changes.

[7]. Factory reset

To reset to factory mode, press and hold the switch for 12 seconds with a small paperclip. The LED begin one time then stays on and after 7s starts to flash. Release the switch when the LED extinguishes. All the transmitters and limits are erased.

[8]. Manual operation

Press the man set button and the motor will move in the opposite direction from the last movement. Press this button again to stop the motor.

E TROUBLE SHOOTING

The motors doesn't work

Verify:

- The battery of the motor
- The battery of the remote control
- The compatibility of the remote control

The equipment stops to soon

Verify:

- The end-limits of the motor are properly adjusted
- The crown is properly fitted to the tube

FR

D PROGRAMMING 6-8

[6]. Readjusting the limits

- Press the UP or DOWN button, to move the shade to the limit to be readjusted.
- Press the UP and DOWN buttons simultaneously for 5 seconds until the motor jogs.
- Press and hold the UP or DOWN button to move the shade to the new desired position.
- To confirm the new limits press the MY button for 2 seconds until the motor jogs or press on UP and DOWN button simultaneously to exit without any end-limit changes.

[7]. Factory reset

To reset to factory mode, press and hold the switch for 12 seconds with a small paperclip. The LED begin one time then stays on and after 7s starts to flash. Release the switch when the LED extinguishes. All the transmitters and limits are erased.

[8]. Manual operation

Press the man set button and the motor will move in the opposite direction from the last movement. Press this button again to stop the motor.

E TROUBLE SHOOTING

The motors doesn't work

Verify:

- The battery of the motor
- The battery of the remote control
- The compatibility of the remote control

The equipment stops to soon

Verify:

- The end-limits of the motor are properly adjusted
- The crown is properly fitted to the tube

US

A CHARACTERISTIC

B CAUTION

ES

A CARACTERÍSTICAS

B PRECAUCIÓN

IT

A CARATTERISTICHE

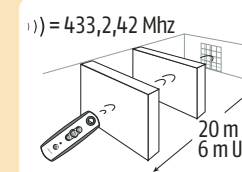
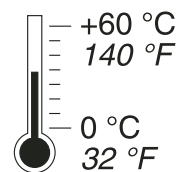
B AVVERTENZA

FR

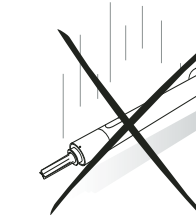
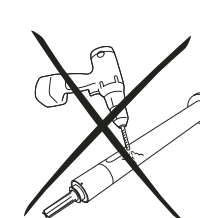
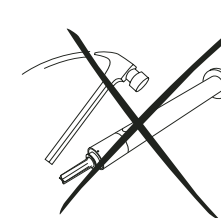
A CARACTERISTIQUES

B AVERTISSEMENT

A



B



US**C INSTALLATION & WIRING**

- [1]. Tube preparation
- [2]. Motor mounting
- [3]. Install the motor in the tube
- [4]. Install the tube on the brackets
- [5]. Power Supply & Wiring

D PROGRAMMING 1-5**Connect power to motor****[1]. Assign a transmitter**

For multi-channel transmitters, select the desired channel. Press and hold the UP and DOWN buttons simultaneously. The motor jogs. The transmitter address is temporarily record.

[2]. Check polarity

If the direction is wrong, press the MY button for 5 seconds until the motor jogs.

[3]. End limit adjustment

- a. Press the UP button to move the shade to the UP position.
- b. Press the MY and DOWN buttons and release them once the motor begins to move.
- c. Press MY button when it reaches the desired down position.
- d. If necessary adjust the down position using the UP and DOWN buttons.
- e. Press the MY and UP buttons and release them once the motor begins to move. The motor moves up and will stop at its UP LIMIT.
- f. To confirm the ends limits press the MY button for 2 seconds until the motor jogs.
- g. Press the programming button on the back of the RTS transmitter until the motor jogs. The transmitter address is permanently record.

[4]. Adding or deleting additional transmitters

- a. With a remote control:
Press 2s the programming button of the A transmitter until the motor jogs. Press the programming button of the B transmitter until the motor jogs. The B transmitter is recorded or deleted.
- b. With the LT30 switch:
Press 2s the LT30 switch with a small paperclip the LED blink one time and then stays on. Release the switch the transmitter until the motor jogs. The transmitter is recorded or deleted.

To delete all the transmitter, press the switch for 7 seconds, release the switch after the LED starts flashing. The motor jogs one time. All the transmitter are deleted but all the end limits remain in memory.

[5]. Intermediate position

- a. To set the intermediate position, move the shade to the desired position with the UP and DOWN button. After press the MY button for 5 seconds until the motor jogs.
- b. To delete the intermediate position, move to this position and press the MY button for 5 seconds until the motor jogs.
- c. To readjust the intermediate position, move to the new intermediate position and press the MY button for 5 seconds until the motor jogs.
- d. To move the shade to the intermediate position, press briefly the MY button.

ES**C INSTALLATION & WIRING**

- [1]. Tube preparation
- [2]. Motor mounting
- [3]. Install the motor in the tube
- [4]. Install the tube on the brackets
- [5]. Power Supply & Wiring

D PROGRAMMING 1-5**Connect power to motor****[1]. Assign a transmitter**

For multi-channel transmitters, select the desired channel. Press and hold the UP and DOWN buttons simultaneously. The motor jogs. The transmitter address is temporarily record.

[2]. Check polarity

If the direction is wrong, press the MY button for 5 seconds until the motor jogs.

[3]. End limit adjustment

- a. Press the UP button to move the shade to the UP position.
- b. Press the MY and DOWN buttons and release them once the motor begins to move.
- c. Press MY button when it reaches the desired down position.
- d. If necessary adjust the down position using the UP and DOWN buttons.
- e. Press the MY and UP buttons and release them once the motor begins to move. The motor moves up and will stop at its UP LIMIT.
- f. To confirm the ends limits press the MY button for 2 seconds until the motor jogs.
- g. Press the programming button on the back of the RTS transmitter until the motor jogs. The transmitter address is permanently record.

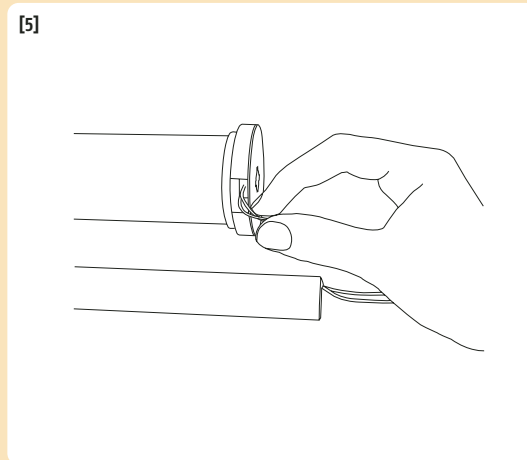
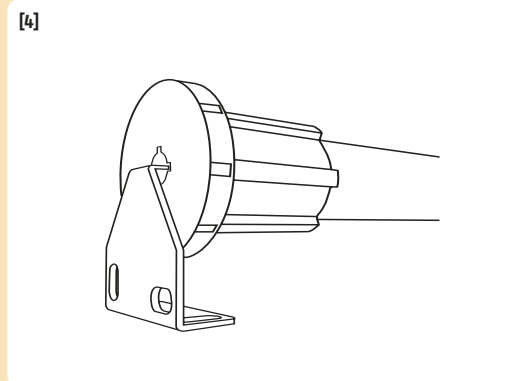
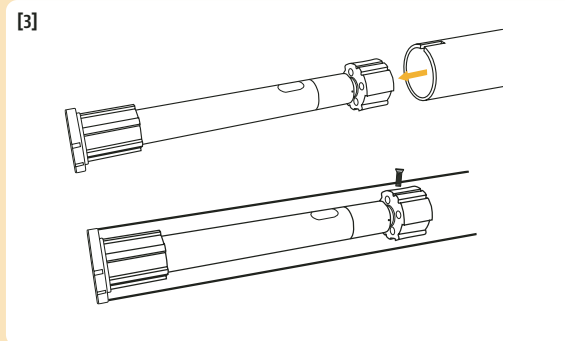
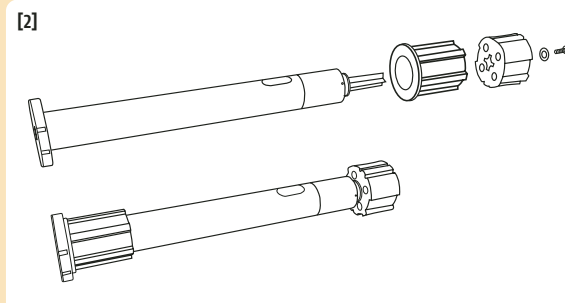
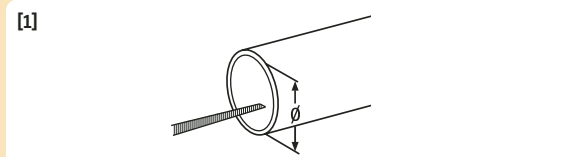
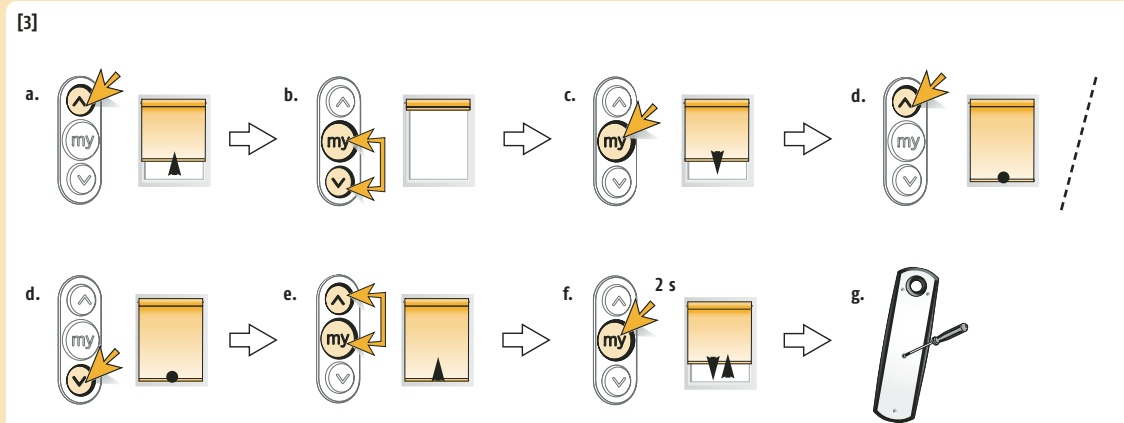
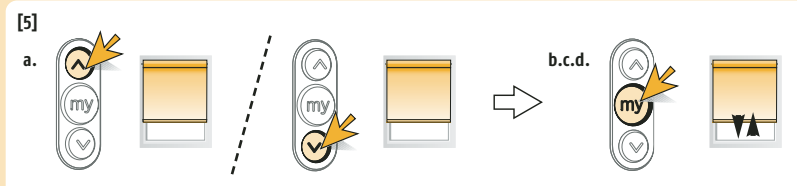
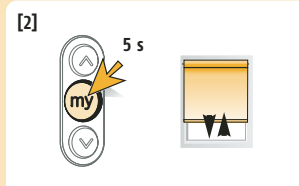
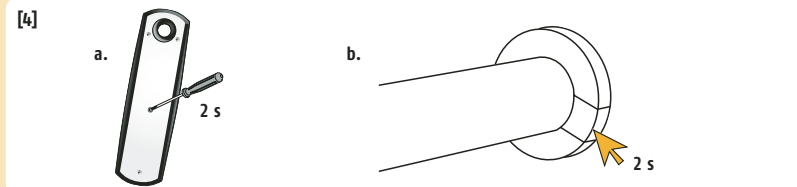
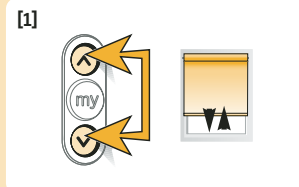
[4]. Adding or deleting additional transmitters

- a. With a remote control:
Press 2s the programming button of the A transmitter until the motor jogs. Press the programming button of the B transmitter until the motor jogs. The B transmitter is recorded or deleted.
- b. With the LT30 switch:
Press 2s the LT30 switch with a small paperclip the LED blink one time and then stays on. Release the switch the transmitter until the motor jogs. The transmitter is recorded or deleted.

To delete all the transmitter, press the switch for 7 seconds, release the switch after the LED starts flashing. The motor jogs one time. All the transmitter are deleted but all the end limits remain in memory.

[5]. Intermediate position

- a. To set the intermediate position, move the shade to the desired position with the UP and DOWN button. After press the MY button for 5 seconds until the motor jogs.
- b. To delete the intermediate position, move to this position and press the MY button for 5 seconds until the motor jogs.
- c. To readjust the intermediate position, move to the new intermediate position and press the MY button for 5 seconds until the motor jogs.
- d. To move the shade to the intermediate position, press briefly the MY button.

C**D****IT****C INSTALLATION & WIRING**

- [1]. Tube preparation
- [2]. Motor mounting
- [3]. Install the motor in the tube
- [4]. Install the tube on the brackets
- [5]. Power Supply & Wiring

D PROGRAMMING 1-5**Connect power to motor****[1]. Assign a transmitter**

For multi-channel transmitters, select the desired channel. Press and hold the UP and DOWN buttons simultaneously. The motor jogs. The transmitter address is temporarily record.

[2]. Check polarity

If the direction is wrong, press the MY button for 5 seconds until the motor jogs.

[3]. End limit adjustment

- a. Press the UP button to move the shade to the UP position.
- b. Press the MY and DOWN buttons and release them once the motor begins to move.
- c. Press MY button when it reaches the desired down position.
- d. If necessary adjust the down position using the UP and DOWN buttons.
- e. Press the MY and UP buttons and release them once the motor begins to move. The motor moves up and will stop at its UP LIMIT.
- f. To confirm the ends limits press the MY button for 2 seconds until the motor jogs.
- g. Press the programming button on the back of the RTS transmitter until the motor jogs. The transmitter address is permanently record.

[4]. Adding or deleting additional transmitters

- a. With a remote control:
Press 2s the programming button of the A transmitter until the motor jogs. Press the programming button of the B transmitter until the motor jogs. The B transmitter is recorded or deleted.
- b. With the LT30 switch:
Press 2s the LT30 switch with a small paperclip the LED blink one time and then stays on. Release the switch the transmitter until the motor jogs. The transmitter is recorded or deleted.

To delete all the transmitter, press the switch for 7 seconds, release the switch after the LED starts flashing. The motor jogs one time. All the transmitter are deleted but all the end limits remain in memory.

[5]. Intermediate position

- a. To set the intermediate position, move the shade to the desired position with the UP and DOWN button. After press the MY button for 5 seconds until the motor jogs.
- b. To delete the intermediate position, move to this position and press the MY button for 5 seconds until the motor jogs.
- c. To readjust the intermediate position, move to the new intermediate position and press the MY button for 5 seconds until the motor jogs.
- d. To move the shade to the intermediate position, press briefly the MY button.

FR**C INSTALLATION & WIRING**

- [1]. Tube preparation
- [2]. Motor mounting
- [3]. Install the motor in the tube
- [4]. Install the tube on the brackets
- [5]. Power Supply & Wiring

D PROGRAMMING 1-5**Connect power to motor****[1]. Assign a transmitter**

For multi-channel transmitters, select the desired channel. Press and hold the UP and DOWN buttons simultaneously. The motor jogs. The transmitter address is temporarily record.

[2]. Check polarity

If the direction is wrong, press the MY button for 5 seconds until the motor jogs.

[3]. End limit adjustment

- a. Press the UP button to move the shade to the UP position.
- b. Press the MY and DOWN buttons and release them once the motor begins to move.
- c. Press MY button when it reaches the desired down position.
- d. If necessary adjust the down position using the UP and DOWN buttons.
- e. Press the MY and UP buttons and release them once the motor begins to move. The motor moves up and will stop at its UP LIMIT.
- f. To confirm the ends limits press the MY button for 2 seconds until the motor jogs.
- g. Press the programming button on the back of the RTS transmitter until the motor jogs. The transmitter address is permanently record.

[4]. Adding or deleting additional transmitters

- a. With a remote control:
Press 2s the programming button of the A transmitter until the motor jogs. Press the programming button of the B transmitter until the motor jogs. The B transmitter is recorded or deleted.
- b. With the LT30 switch:
Press 2s the LT30 switch with a small paperclip the LED blink one time and then stays on. Release the switch the transmitter until the motor jogs. The transmitter is recorded or deleted.

To delete all the transmitter, press the switch for 7 seconds, release the switch after the LED starts flashing. The motor jogs one time. All the transmitter are deleted but all the end limits remain in memory.

[5]. Intermediate position

- a. To set the intermediate position, move the shade to the desired position with the UP and DOWN button. After press the MY button for 5 seconds until the motor jogs.
- b. To delete the intermediate position, move to this position and press the MY button for 5 seconds until the motor jogs.
- c. To readjust the intermediate position, move to the new intermediate position and press the MY button for 5 seconds until the motor jogs.
- d. To move the shade to the intermediate position, press briefly the MY button.